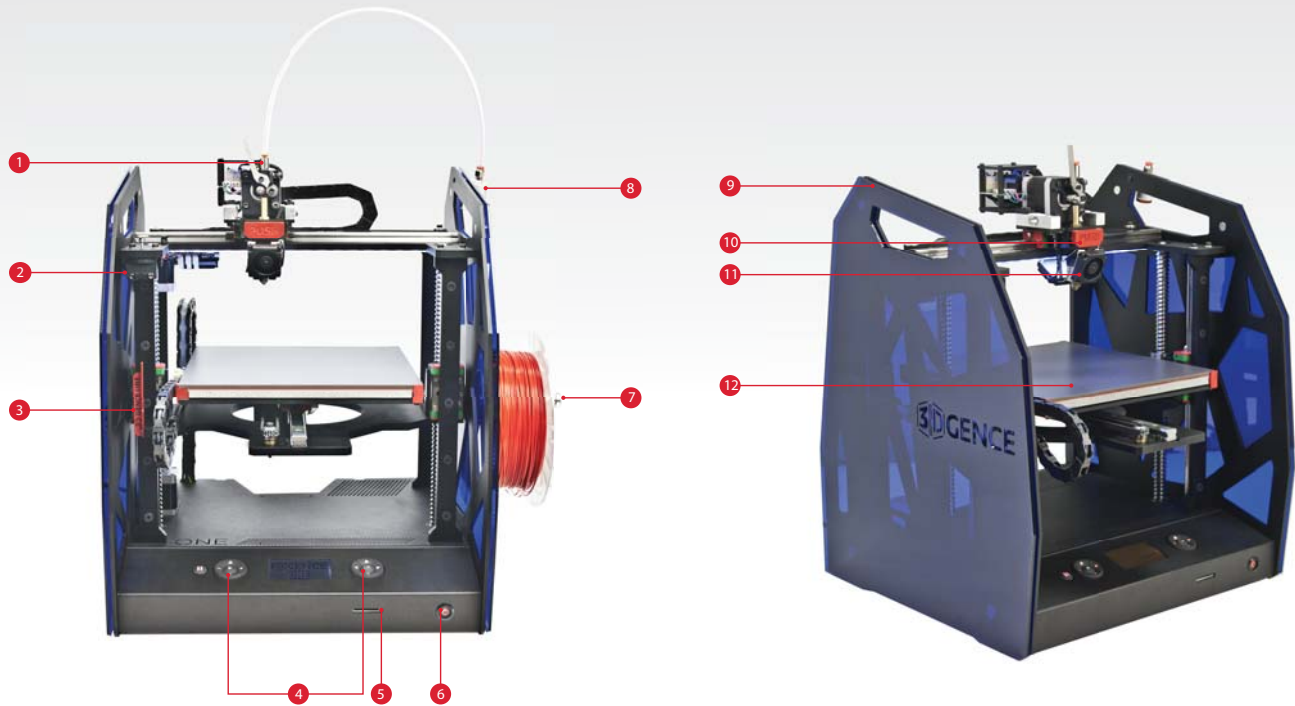


# 3DGence ONE Printer

Advanced and reliable 3D printing platform with patented hotend change system



## GETTING TO KNOW



- |                          |                              |                        |                            |                            |                         |
|--------------------------|------------------------------|------------------------|----------------------------|----------------------------|-------------------------|
| <b>1.</b> Extruder       | <b>3.</b> Z-axis endstop pin | <b>5.</b> SD card slot | <b>7.</b> Spool holder     | <b>9.</b> Carrying handles | <b>11.</b> Cooling fans |
| <b>2.</b> Z-axis endstop | <b>4.</b> Control pad        | <b>6.</b> Power switch | <b>8.</b> Filament cleaner | <b>10.</b> PUSH button     | <b>12.</b> Heatbed      |

## WELCOME

Thank you for choosing 3DGence ONE 3D printer. Before attempting to use 3DGence ONE printer, we strongly recommend you to read the information contained in the manual and comply with it fully to prevent any future device failures.

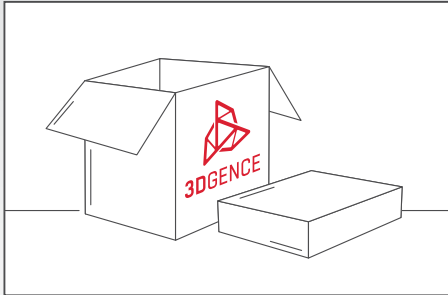
In case of any problems or concerns please contact our technical department at the following address:  
[support@3dgence.com](mailto:support@3dgence.com)

## IN THE PACKAGE

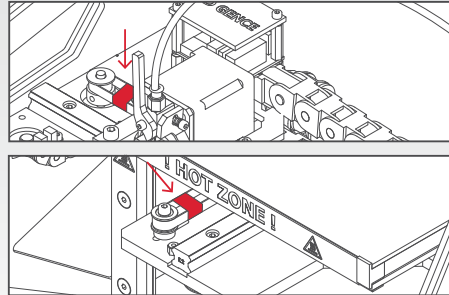
- 3DGence ONE printer
- USB memory stick with software
- Memory card
- Filament (wire spool)
- Power cable
- USB cable
- Bowden (the wire guiding the filament to the extruder)
- Protective gloves
- Filament cleaner
- Spatula
- Spool holder
- The print head nozzle (installed)
- Tweezers
- Polycarbonate side panels
- Allen tool

# QUICK START GUIDE

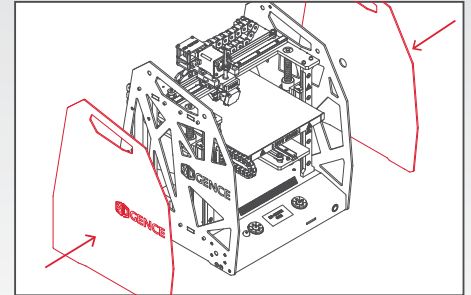
READ OTHER SIDE BEFORE STARTING



- 1** Take the printer out of the box, remove the packaging materials and the filament.



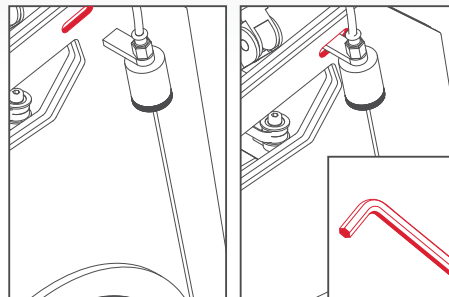
- 2** Remove the yellow shipping clips.



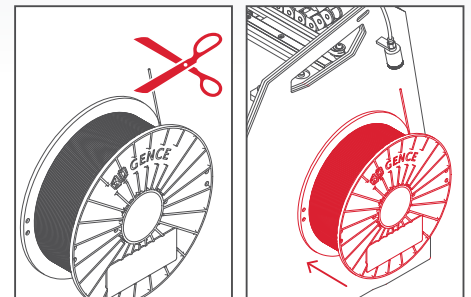
- 3** Remove the security foil from the plastic covers. Attach covers to the printer sides.



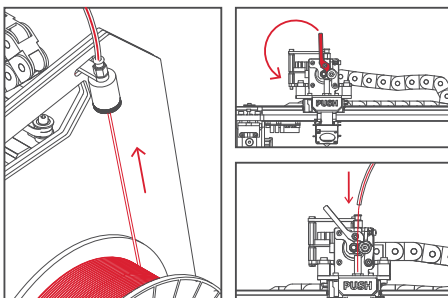
- 4** Attach the spool holder to the printer side (NOTE: left handed thread)



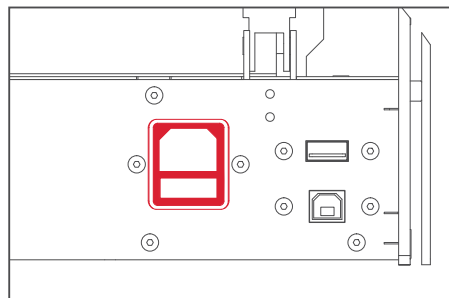
- 5** Attach the filament cleaner to the upper side of the printer with the allen tool provided.



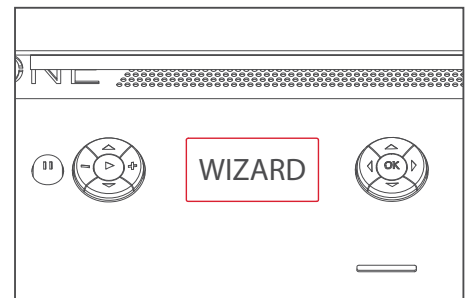
- 6** Unpack the filament, cut its tip off with scissors and place it on the handle.



- 7** Unlock the extruder by moving lever to the left (counterclockwise), route the filament through the cleaner tube and insert it into the extruder.



- 8** Attach the power cable to the printer and turn the printer on.



- 9** Follow the WIZARD on the printer's display.

FOR MORE INFORMATION VISIT [WWW.3DGENCE.COM/SUPPORT](http://WWW.3DGENCE.COM/SUPPORT)